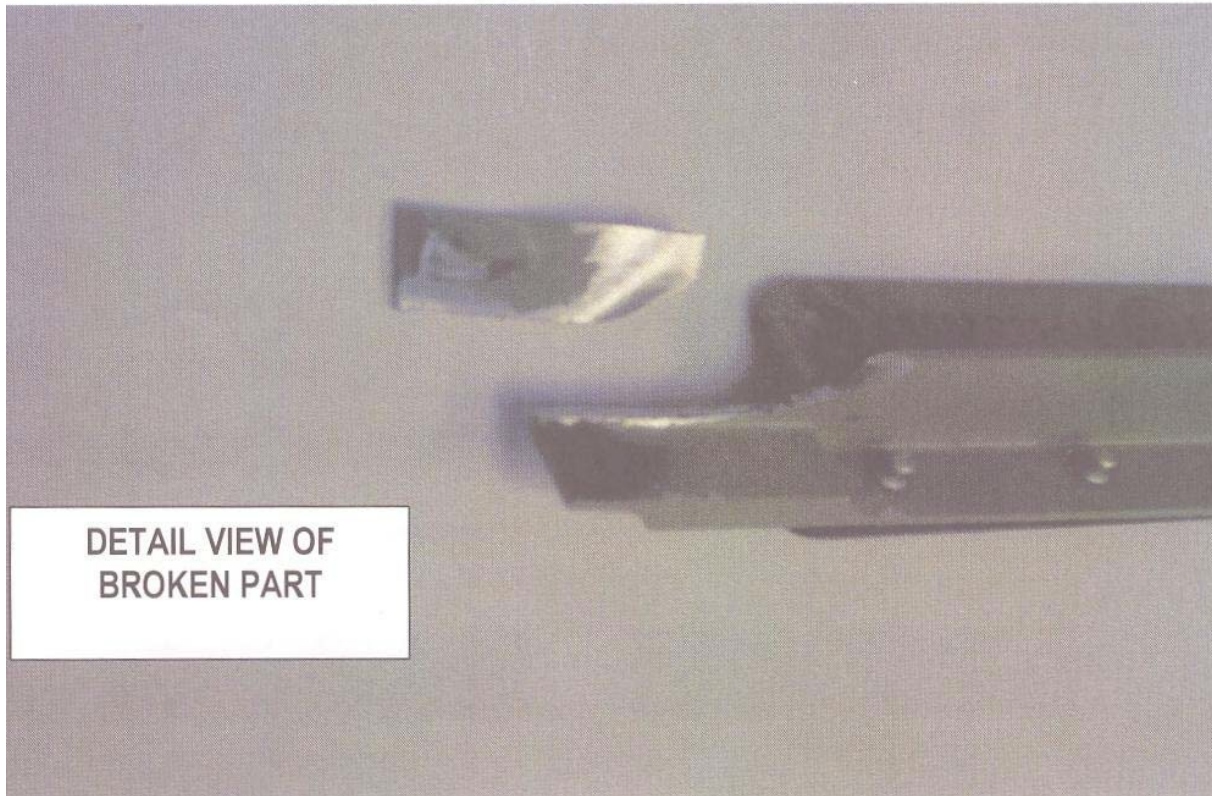


Cessna 560 XL, Broken Aileron Control Lock Arm ATA 2770

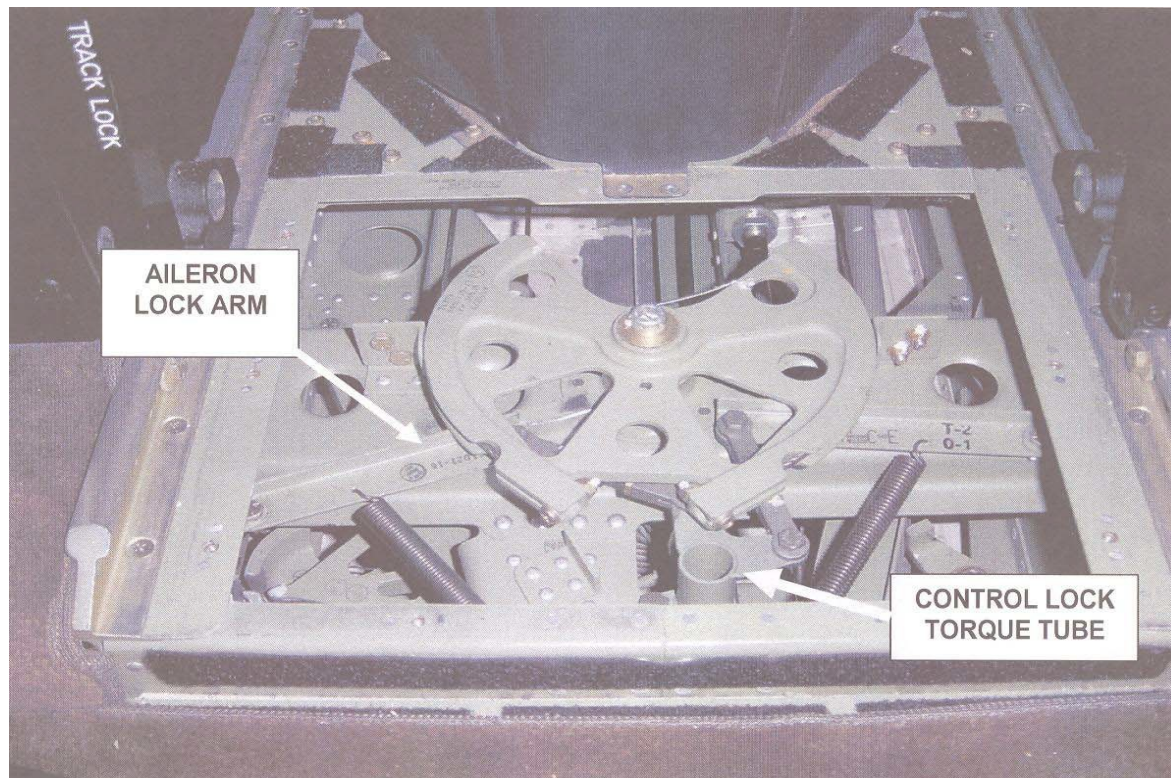
A submitter states that he found the control lock system partially inoperative on post-flight inspection. Further investigation determined the left Aileron Lock Arm was broken at the lock feature contact area.

The cause of the part failure is unknown (P/N 666102127). The part appears to have suffered overloading at the contact point, resulting in a crack and *(leading)* to the failure of the lock arm."

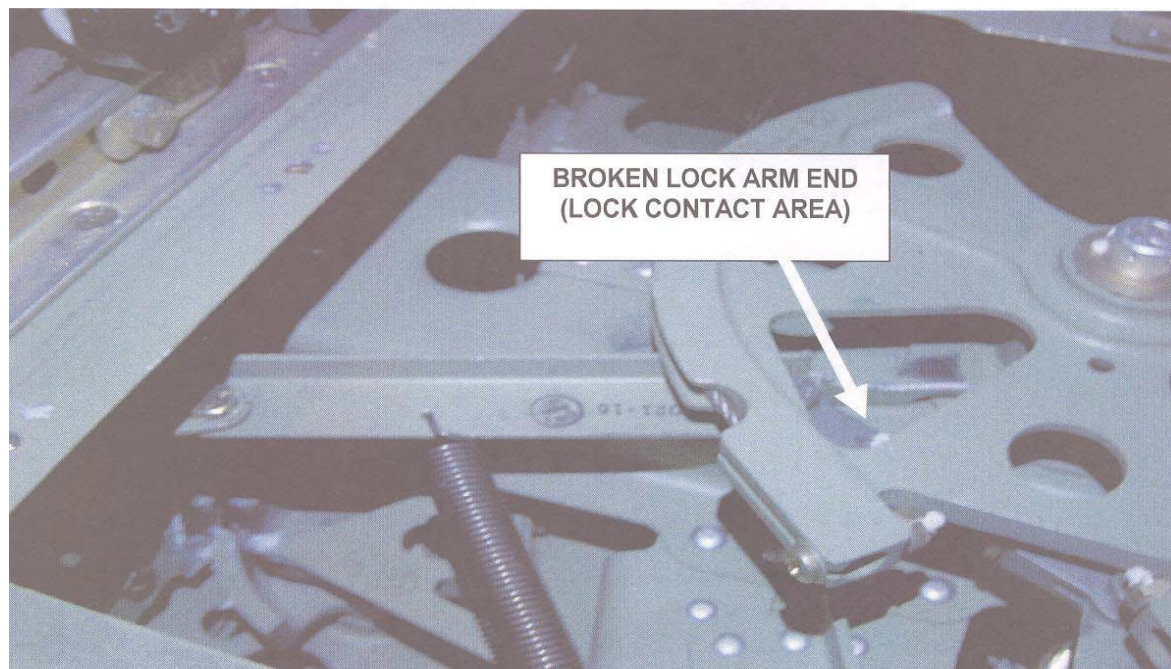
VIEW OF BROKEN LOCK ARM



Cessna 560 XL, Broken Aileron Control Lock Arm ATA 2770



AREA BELOW COCKPIT FLOOR JUST BEHIND CENTER CONSOLE



Part Total Time: 658.0 Hours